

## New Women's Health Center Opening



Dr. Pamela Lewis, breast surgeon and Susan Goodwill, chair of the Women & Medicine, Catherine McAuley Society review plans for the new waiting and reception area for the Women's Health Center

St. Mary's Medical Center is expanding its women's health service line beyond its current emphasis on breast health, to achieve a comprehensive program serving women's health care needs from midlife (40 years of age) through mature adulthood (65+ years of age). To a great extent, this program enhancement initiative emanated from SMMC's Primary Care Physician Council. Phase I involves the establishment of a Women's Health Center by which mammography, bone densitometry, ultrasound and other women's imaging services will be centralized to a new outpatient friendly location. This location will be in the current Mercy Imaging Lab, which is located in the medical office building at One Shrader Street. The initial phase will allow for certain renovations to accommodate

the centralization of services, make facility improvements to enhance the registration and reception processes, and create new program support spaces including a radiologist reading room.

As the program grows there is consideration being given to include additional services that would address a variety of women's health issues/conditions. These additional services may include specialized physician consultative services involving endocrinology, urogynecology, surgical oncology, dermatology, etc. These conditions include endometriosis, fibroids incontinency, chronic pelvic pain, urinary tract infections, uterine bleeding, menopause/hormone therapy and vascular conditions.

The new Women's Health Center will serve as the "hub" for future development of the St. Mary's Medical Center

women's health service line. The focus of Phase I of program development is to improve women's access to breast screening and diagnostic services so that greater numbers of female patients can obtain these services at SMMC in a comfortable, convenient location. To accomplish this, St. Mary's will install a new digital mammography unit and relocate bone densitometry services to the new Center location. An ultrasound machine already resides there.

St. Mary's Medical Center currently provides services that are integral to breast health. These services include a second digital mammography unit in the hospital used for diagnostic mammography, and stereotactic breast biopsy and needle localization services. SMMC also offers breast tumor board, second opinion and discordance clinic services, and infusion and radiation therapy services. In addition, surgical breast services, including surgical biopsy, mastectomy and reconstructive surgery are provided through St. Mary's surgical program.

The St. Mary's Medical Center Foundation has raised \$288,120 towards the goal of \$750,000 for this project. Our leading supporters for this project include: The St. Mary's Auxiliary, The Carl Gellert and Celia Berta Gellert Foundation, Susan and Sidney Goodwill, the Women & Medicine, Catherine McAuley Society, and scores of grateful patients. A Tree of Life honoring donors and loved ones will be in the reception and waiting room for the new Center and is one way for donors to support this project. Please call the Foundation at (415) 750-5790 for additional information.

## St. Mary's Family of Giving

St. Mary's may be a hospital of over 1,000 employees, but it is a family that comes together in a time of need. Whether through donating money out of their paychecks to the employee giving campaign, supporting the coat drive to provide warmth for the homeless, or buying a new toy for a San Francisco kid to enjoy, St. Mary's employees are a family that cares.

Employees not only gave monetarily during the holiday season, but many also donated coats and toys to help the community. In response to a calling to action from the Emergency Department, which is directed by Michael Thomas, the employees collected over 250 coats for the homeless to stay warm during the cold winter and with Sr. Director, Anthony Mistretta's help more



St. Mary's staff greets the San Francisco Fire Department at the toy drive

In late 2011, employees were given the opportunity to support the caring mission of the hospital where they work to support a need in the community: help raise funds for a new Women's Health Center at One Shrader, which many employees will be able to utilize for their own health needs. Whatever the reason, amid all the fun, raffle prizes and excitement, the 2011 Employee Giving Campaign exceeded its ambitious goal!

than 650 toys for the annual San Francisco Fire Department Toy Program. This unique program is the largest firefighter toy program in the U.S. and has been in operation since 1949. St. Mary's is the only hospital to participate this past season and was one of the largest donors.

Thank you to all employees who made charitable contributions in 2011!



Over 650 toys collected by St. Mary's employees filled the lobby for the toy drive

## Past Board Chair Reflects: Doug Dillard



*After 12 years, I feel as though I am parting ways with a member of my family...my tenure with the St. Mary's Foundation Board of Directors has come to an end.*

*Fundraising is an exhilarating experience much like a roller coaster. Periods of slow climbs, challenging twists and turns, an electrifying commitment to raise millions of dollars, and then the satisfaction of standing in new facilities.*

*Gratefully, it was not a solitary effort. I had the camaraderie and support of very smart and generous Board members. They shared their amazing sense of humor and patience; and never strayed from their commitment to support the hospital. I will always remember with pride what we were able to accomplish.*


*Because of our ongoing success, I am very excited for the Foundation's future:*

- The Cancer Center is winning great acclaim in the marketplace with strong approval ratings from patients and physicians
- The new Women & Medicine donor group is thriving with the leadership of Dr. Pam Lewis and Susan Goodwill
- The Board recently added six new directors
- The employees are making substantial contributions every year, and
- There are many new planned projects for growth and strength.

*There will always be new opportunities and adventures for the Foundation, and I wish the Board and staff greater prosperity and many victories.*



Message from  
St. Mary's President



ANNA CHEUNG

*At the beginning of every year, it is a time for optimism and inspiration, to build upon our accomplishments, and direct our energy towards the future to do greater good.*

*All donations to St. Mary's Foundation help make our dreams a reality. In January 2012 we marked the first anniversary for our \$22 million Cancer Center, and as I write this message, the Foundation will be completing its \$8.75 million capital campaign to fund the new Cancer Center, Vascular Suite, and Women's Health Center. To those of you who have contributed precious time and resources, you should feel proud that these projects represent significant growth for St. Mary's and secure its place as a valued community asset for our patients, physicians, and employees.*

*Each person who gives to St. Mary's becomes a part of our team in providing excellent care, and I cannot ask for better partners than Doug Dillard and the Foundation Board. For the past six years, Doug led the Foundation and the hospital to share a vision and bring it to reality. It was definitely a team effort of leaders, grateful patients, employees, and physicians all making important contributions.*

*In the coming years, the Foundation plans to increase its outreach to grateful patients and supporters. There is much to share about St. Mary's excellence and personalized care, and much to be said about the tremendous impact of personal contributions.*

*I and St. Mary's are thankful and appreciative of every donor and every gift. It is the sense of family, friends, and caring individuals that make St. Mary's a special place; and I thank you.*

## Help Fund a Need at the Hospital

As you can imagine, the “wish list” needs of St. Mary’s are diverse and ongoing. Our nurses, technicians, and medical professionals are some of the best in San Francisco, and the Foundation strives to support them with the best equipment. The Foundation staff can assist a grateful patient or donor who may be interested to know a particular department’s need and the range of gifts that could help make a difference.

There are numerous St. Mary’s departments that could benefit from your support. For example, there are many visitors to the cafeteria and a significant number of older patrons eat a healthy hot lunch every day with the special senior discount, and it is heavily used by all the employees. The Foundation would like to support new chairs and tables at a cost of approximately \$25,000, and a gift of any size would help achieve the purchase.

Below is a list of departments who need your help:

- Adolescent Psychiatric Unit
- Cardiology
- Emergency Department



- ICU
- Laboratory
- Pharmacy
- Physical Therapy
- Radiology
- Spine Center
- Surgery

Please contact the Foundation at (415) 750-5790 for more information.

## News from the Sister Mary Philippa Clinic

### Patient Spotlight: Kenzi Robi

*Abridged version from the Hospital's Inside450 publication*

A shot in the dark changed Kenzi Robi’s life forever. New Year’s Eve. A party. Drinking. A fight. A macho 19-year-old Robi, who never knew what hit him.

Robi was shot in the neck by an unknown assailant who was never brought to justice. The injury paralyzed him from the neck down and a new, very different chapter of his life began.

“I remember the party and drinking,” he said. “Then the lights went out. Two weeks later I woke up at St. Mary’s Medical Center.”

Robi was devastated when he learned he was a quadriplegic. “I probably said a four-letter word,” he recalled. “It was the worst.”

He had been studying graphic arts at San Francisco City College at the time of his accident. When an

occupational therapist at St. Mary’s learned about that, she encouraged him to get back to painting. With adaptive equipment, he tried using his hand, but it didn’t work.

“The type of art I did was very fine and precise,” he said. “I couldn’t get that control back.”

But eventually Robi learned to work with a mouth-stick. Today he paints in acrylics and watercolor. Many days he goes outside to paint, sometimes drawing attention from adults who throw money in his basket, but always attracting children. “Kids stop in their tracks and say, ‘Mommy, that man is painting with his mouth!’” Robi’s paintings were recently displayed at the Sister Mary Philippa Clinic. He hopes to make the sale of his art a source of financial support.

## THE YEAR IN REVIEW

FUND A NEED	2	GOLF CLASSIC	5
CHARITABLE GIFT ANNUITIES	3	ST. MARY'S GALA	5
EMPLOYEE DONOR HIGHLIGHT	3	FINANCIAL NEWS	6
McAULEY ADOLESCENT UNIT	3	FOUNDATION GRANTS ADMINISTERED	6
CATHERINE McAULEY SOCIETY	4	ASIAN PHYSICIANS	7
TRIBUTE TO JEAN LAWSON	4	MEET DR. FRANCIS CHARLTON, JR.	7
DOCTOR'S DAY	4	EMPLOYEE DONOR HIGHLIGHT	7

To learn more about CHW's name change to Dignity Health, please go to [www.dignityhealth.org](http://www.dignityhealth.org)  
If you would prefer not to receive mail from us, please contact Andrea Whittaker at [Andrea.Whittaker@dignityhealth.org](mailto:Andrea.Whittaker@dignityhealth.org) or call (415) 750-5790

## Giving So You May Receive: the Charitable Gift Annuity

In many instances today people are looking for increased income from their assets. Returns from fixed investments have been reduced due to lower interest rates. The Charitable Gift Annuity (CGA) can be a way of providing increased income, especially for those who are living on fixed incomes. Most folks who choose the CGA are retirees who want to increase their cash flow, enjoy the security of guaranteed payments, and receive an income tax deduction. Others choose a CGA to provide financial assistance to an elderly parent or sibling. The gift of a CGA can benefit you, your family, the community and St. Mary's Medical Center Foundation.

In simple terms, a Charitable Gift Annuity is a gift that is a contractual agreement between the donor and St. Mary's Medical Center Foundation. This legal contract states that St. Mary's Medical Center Foundation agrees to pay the donor(s) a lifetime income. Upon the death of the beneficiaries, the remaining principal is available to St. Mary's Medical Center Foundation to help provide health resources to the community.

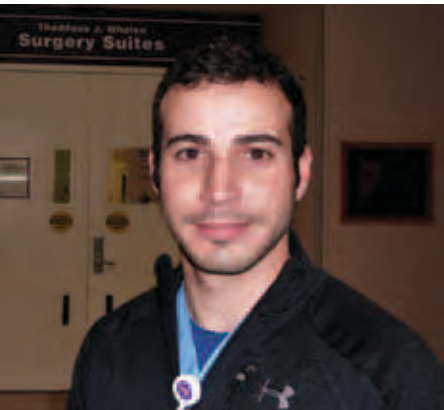
Charitable Gift Annuities may be funded with cash and appreciated securities. The payments can be distrib-

uted annually, semi-annually, quarterly or monthly. The size of the payment is dependent on several factors: the age(s) of the annuitant(s), the number of annuitants, and the value of the contribution.

While consulting your financial or tax advisor, you may discover that a Charitable Gift Annuity may be for you. If you would like more information concerning the CGA program at St. Mary's Medical Center Foundation, please contact Mary Poppingo at (415) 750-5790.

CGA RATES EFFECTIVE 1/1/2012		
Age	Payout	Rate
60		4.4%
65		4.7%
70		5.1%
75		5.8%
80		6.8%
85		7.8%
90+		9.0%

## Driving a Change: Meet Max Gomez



Whether he is managing the surgical teams at St. Mary's, donating to Foundation for Freedom, or riding his beloved motorcycle, Max Gomez is always driving for a cause. Max, Director of Peri-Operative Services at St. Mary's enjoys a challenge and he has definitely had his share over the years.

Growing up a military kid, Max quickly learned to adapt to new surroundings and strive to achieve his best in each situation. After graduating from the University of the Puget Sound with his bachelor's in Exercise Science, Max wasn't quite sure where the road might lead next. However, with a little sibling competition, Max applied to graduate school because as he said, "I didn't want to be the only one without a Masters." He not only got accepted into graduate school, but attended prestigious Yale University, where he graduated with his Masters in Public Health.

After completing a fellowship at Massachusetts General Hospital and

working an additional six years there, Max returned to the Bay Area to be close to his family, who he very much missed. Subsequently, he took the position at St. Mary's, and was excited to work in a small community hospital where he could truly make a difference. His current job responsibilities include overseeing the operations for all surgical services, from the time a patient is admitted until they are discharged or moved to an inpatient bed.

St. Mary's mission is a driving force for Max's ambition and attitude. "I was first attracted to St. Mary's because of its mission to provide high-quality, affordable healthcare to the community." Making the move from a large resource-abundant hospital to a community hospital is a huge change for Max, but one that provides optimistic challenges. "The opportunities at St. Mary's are abundant and keep me motivated to do my best and not let anyone down," says Max. "I respect and value my co-workers, who not only give 110% every day, but push me to do the same."

While Max may be on the fast track to a successful professional future, he keeps himself grounded and makes time to stop and chat with patients and fellow employees around the hospital. He enjoys getting to know new people, spending time with his family and fiancée, and of course driving his motorcycle!

## A Hidden Treasure of St. Mary's

If you were to roam around the hospital, there is one unit you would probably not find...and it is probably the best treasure of St. Mary's! While the hospital does not have pediatrics, we do serve and make a difference in kids' lives by providing adolescent psychiatric services on both an inpatient and outpatient basis.

The McAuley Adolescent Psychiatric Unit at St. Mary's helps disadvantaged kids, who otherwise might end up on the street alone. The program serves youth whose emotional problems are greatly impacting their psychological, educational, and social functioning. The unit's multidisciplinary treatment team completes academic, psychiatric and social assessments, as well as, substance abuse assessments in order to formulate

an appropriate individualized Plan of Care for each child. This environment offers opportunities to acquire adaptive coping skills and lets the child explore them in a secure, comfortable physical facility. And this treasure is well equipped with a psychiatrist, registered nurses, licensed marriage and family therapists, creative arts therapists, vocational counselor, and special education and paraprofessionals from the San Francisco Unified School District.

Thanks to many generous funders, including many in 2011, the McAuley Psychiatric Unit has been able to keep its doors open and provide this precious jewel of a safe haven to these disadvantaged youth.

### DONATE TO MCAULEY'S POINTS STORE

Help teach a McAuley youth by donating to this "store" which is part of a behavioral modification program that rewards students for good behavior, while teaching them essential accounting skills.

Example of Items Needed:

- Notepads, pens, pencils
- Gift cards to area stores
- Hygiene products
- Purses and totes
- Sports equipment
- Jewelry

If you'd like to donate or want more information, please contact the Foundation at (415) 750-5790.



# WOMEN & MEDICINE: CATHERINE MCAULEY SOCIETY

## Inaugural Luncheon is a Success

The St. Mary's Medical Center Foundation created a new annual giving circle for women based on the rich legacy of Catherine McAuley, the Foundress of the Sisters of Mercy. Catherine McAuley devoted her life to ministering to the poor, sick and uneducated in Dublin, Ireland. Catherine's one aim in life was to use her inherited wealth to alleviate the ills of the poor, and to assist them in realizing their true potential. Catherine's legacy lives on in the works of the Sisters of Mercy and their message of giving and compassion for the needy and less fortunate. St. Mary's Medical Center was founded on this rich heritage of compassionate caring.

This new giving club Women & Medicine, Catherine McAuley Society kicked off with a well-attended luncheon on November 16 in Morrissey



Charter members of the Women & Medicine, Catherine McAuley Society

Hall. Our keynote speaker was Pamela P. Lewis, M.D., F.A.C.S. who spoke on Breast Health –Breast Cancer. Members and guests who support women's health walked away with a new understanding of the most pressing issues surrounding breast health, Susan Goodwill, our giving circle chair, helped usher in our 30 new members

with her enthusiasm and commitment to this important cause.

This special group of women will meet three times a year to share ideas and review the most pressing health care needs for women at St. Mary's Medical Center. As a group, they will vote to direct their funds to a specific area, which will

improve women's health care. Because this is a philanthropic society, each member contributes \$1,000 annually. Although there is no commitment past the first year, our hope is that each year individuals would consider renewing their support and introducing the concept to other women so that the giving circle will continue to grow. The first project the funds will be directed to is our new Women's Health Center.

If the enthusiasm that surrounded the inaugural luncheon is any indication of the future of this giving circle, they will be a productive advocate for women's healthcare at St. Mary's Medical Center. For more information about joining as a member, please contact Mary Poppingo at the St. Mary's Foundation at (415) 750-5790 [mary.poppingo@dignityhealth.org](mailto:mary.poppingo@dignityhealth.org).

### CHARTER MEMBERS

- Barbara Bottarini
- Anna Cheung
- Mary Ann Sebastiani Cuneo
- Michele Dillard
- Sandra Dratler
- Sister M. Ellene Egan
- Heather Fong
- Lynne Fox
- Laura Fullem-Chavis
- Susan Goodwill
- Ada Beth Harris
- Sara Huang, M.D.
- Claire Marie Johnston
- Jean Lawson\*
- Pamela Lewis, M.D.
- Dr. Catherine E. Main
- Bernita McTernan
- Terri Mendelson, M.D.
- E. Ann Myers, M.D.
- Denise Nicco
- Tanya Peterson
- Tillie Piscevich
- Mary Poppingo
- Anne Riley
- Jena Ruhland\*
- Megin Scully, M.D.
- Toni Ann Secrest
- Cathy Taylor
- Katie Vogelheim
- Jane Waal

\*deceased

## JEAN LAWSON

### A Passion for Life, A Commitment to Helping



L to R: Julie Morelli, Dr. Remo Morelli, Jean Lawson, Mary Lawson, and George Lawson

On November 18, 2011, St. Mary's Medical Center lost a dear friend in the passing of Jean Consuelo Lawson. Jeanie was an active member of St. Mary's Medical Center Auxiliary for decades helping to raise money and friends for the hospital. The Auxiliary planned a memorial mass on Wednesday, April 4th at noon in the hospital chapel to remember her. In addition to her work with the Auxiliary, Jeanie also served on the Foundation's Capital Campaign Cabinet. She enthusiastically supported the efforts to raise money for our new Vascular Suite in the Cardiac Cath Lab.

Jeanie hosted a dinner in September of 2010 at her home with chef and proprietor, Peter Osborne from MoMo's. Dr. Remo Morelli and Dr. Richard Podolin attended and spoke about the importance of this new suite and heart disease in women. Jeanie knew that close to 8.6 million women die from heart disease each year, which accounts for a third of all deaths in women. She embraced this project and was always pushing us to do more to raise money so that we could provide the best in medical care and technology for our patients. We will miss Jeanie's encouragement, generosity and unbridled commitment to this effort. Jeanie's son George, a member of our Foundation Board, carries on her legacy of commitment to St. Mary's.

## DOCTOR'S DAY

### Patients Honor Their Doctors

*"Thanks to the care of my doctor, I now have a life that would not be possible otherwise."*

*"This note is to express my heartfelt thankfulness for your attentive care to my health."*

With more than 50 holidays celebrated in the United States, often March 30 can get overlooked by many people. However, the grateful patients of St. Mary's always make sure to mark this special day on their calendars and honor their favorite physician on National Doctor's Day!

March 30th commemorates the date Crawford W. Long, M.D. first administered ether as a surgical anesthetic and was first observed in 1933 by Eudora

Brown Almond, wife of Dr. Charles B. Almond, to express appreciation for the lifesaving work of doctors everywhere.

In 2011, 275 grateful patients responded to an appeal and honored more than 90 St. Mary's doctors by raising almost \$30,000 in their honor! Thank you to all who participated and special thanks to all St. Mary's doctors for their dedication, compassion, and expertise in the medical field.

*"My doctor's knowledge, skill, care, and attention are all greatly appreciated."*

*"Thank you for keeping me healthy all year round."*



# 32ND ANNUAL GOLF TOURNAMENT

## Player Wins Hole-in-One

If you weren't a part of the 32nd Annual St. Mary's Golf Tournament at the Olympic Club on Monday, August 29, 2011, you sure missed a day in history at St. Mary's! For the first time, a player, Tim Coughlan won a Range Rover for his hole-in-one. Tim, a member of the KNBR team, who has been golfing for 35 years, was speechless, but thrilled. The Range Rover, which was donated by British Motors Car Distribution Ltd – a division of Qvale Auto Group Inc. –, has been a long-time supporter of St. Mary's Foundation. "The charitable causes St. Mary's supports truly make a difference in the lives of many local community members.

We are thrilled that Mr. Tim Coughlan won a new Range Rover Sport sponsored by our dealership for his amazing hole-in-one at the charity golf tournament and are proud to be involved in this great community event," said Don Endo, CFO. However, that was not the only excitement of the day, golfers began their morning with coffee or a "specialty" beverage that might have helped or hurt their game, while listening to Bagpiper, John Carlin play in the background. The tournament hosted over 185 players and raised more than \$200,000 in support of The Sister Mary Philippa Clinic and the capital

campaign at St. Mary's. Brian Murphy, from the "Murph and Mac" KNBR morning show entertained the crowd in the evening with his comical, but persuasive antics during the silent auction, which featured more than 50 valuable items. To polish off the eventful day, Sister Joanne pulled the winning raffle tickets, which included a week stay in Maui for up to four people! The Foundation thanks all the players who participated in the tournament, the hard-working volunteers and our dedicated sponsors. We particularly thank our top sponsors, Maurice Kanbar and Bank of the West.



Golfers head out on the course for a sunny afternoon filled with excitement and surprise



Player wins 2011 Range Rover Sport for hole-in-one



Margine Sako, Dr. Robert Murray, and Anna Cheung chat before the tournament begins

# A HISTORY OF CARING, A FUTURE OF HEALING GALA



Employee and Physician capital campaign co-chairs are honored

There was not a dry eye or paddle left unraised in the audience of more than 300 at the Foundation's *History of Caring – Future of Healing Gala* on May 12, 2011. The fun evening began with cocktails and dinner catered by Paula LeDuc Fine Catering, which served a scrumptious three-course meal. The lively crowd finished off the event by raising their paddles in the live auction, which benefitted the capital campaign and brought awareness and funding to much-needed clinical trials. Many guests put their dancing

shoes on to polish off the night on the dance floor with Pride and Joy. ***"I particularly want to acknowledge the generosity of our doctors and employees. And to all of those donors who heard the call and stepped forward in support of this new cancer center...Tonight we must acknowledge that our work is not over. We need to complete our capital campaign and open the new Vascular Suite and Women's Center at St. Mary's..."***  
– St. Mary's President and CEO, Anna Cheung

Special guest and TV personality, Chef Guy Fieri delighted the crowd as a guest speaker who helped present awards and shared his own personal medical story. Dr. Bill Link, donor and patient of St. Mary's also shared his account of his battle with cancer, which left many inspired. St. Mary's Foundation not only thanks these two very special guests, but the co-chairs, honorary chairs, and the celebration committee who all worked diligently to pull this spectacular event together. And lastly to all of the attendees who made this



Renown chef, Guy Fieri and Foundation Board Chair, Doug Dillard joke on stage night possible – your support is amazing! We were all humbled and overjoyed by the enthusiasm and support you showed on May 12.



Gala committee co-chairs: Marisa Moret, Michele Dillard, Maria Espiritu, and Cathy Taylor

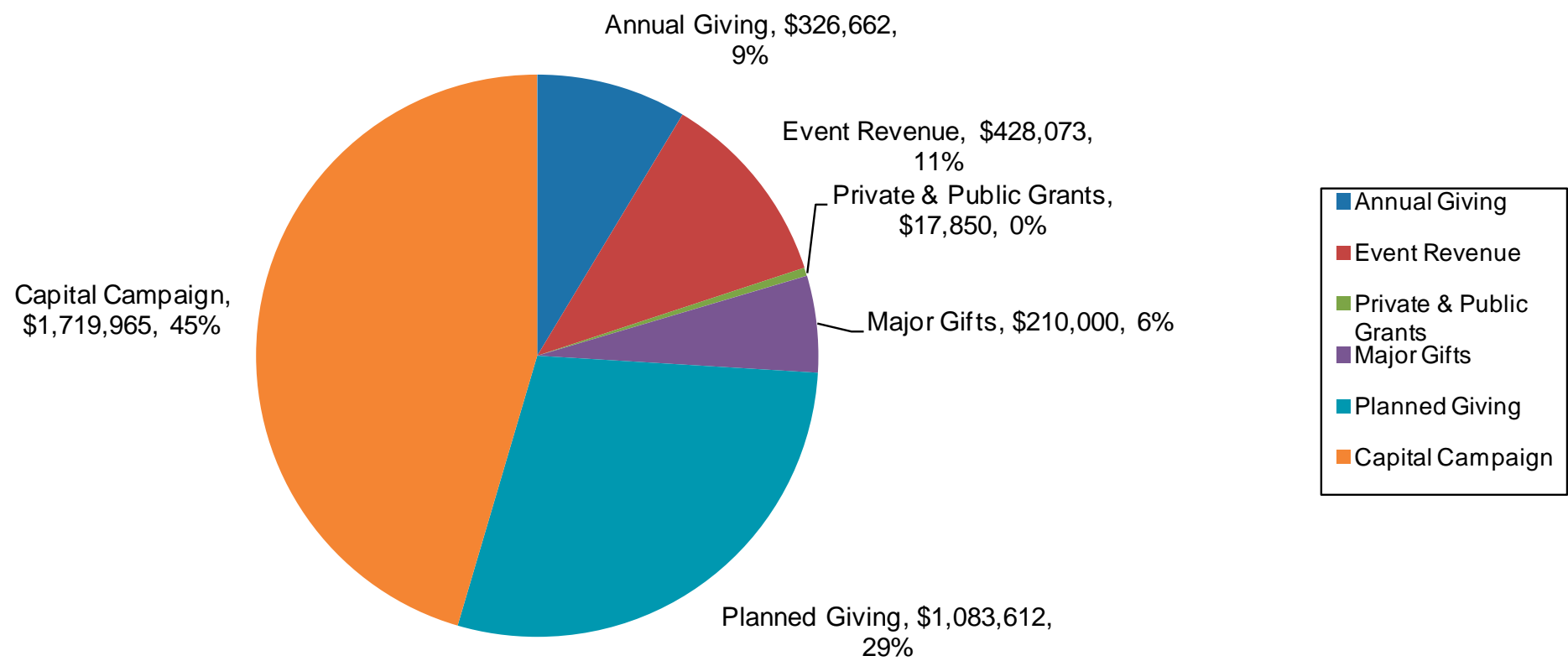
## 2011 GALA SPONSORS

- \$25,000  
Bank of America  
Michele & Doug Dillard
- \$10,000+  
Citi  
Catherine & Michael Taylor, M.D., Friends and Family
- \$5,000+  
Mayor Willie L. Brown, Jr.  
Carolyn & Chris Colpitts  
Flora Springs Winery and Vineyard  
Hanson Bridgett  
Health Diagnostics  
Image Guided Therapeutics  
Julie & Remo Morelli, M.D.  
Marisa Moret, Esq.  
Yvonne & Angelo Sangiacomo  
St. Mary's Medical Staff

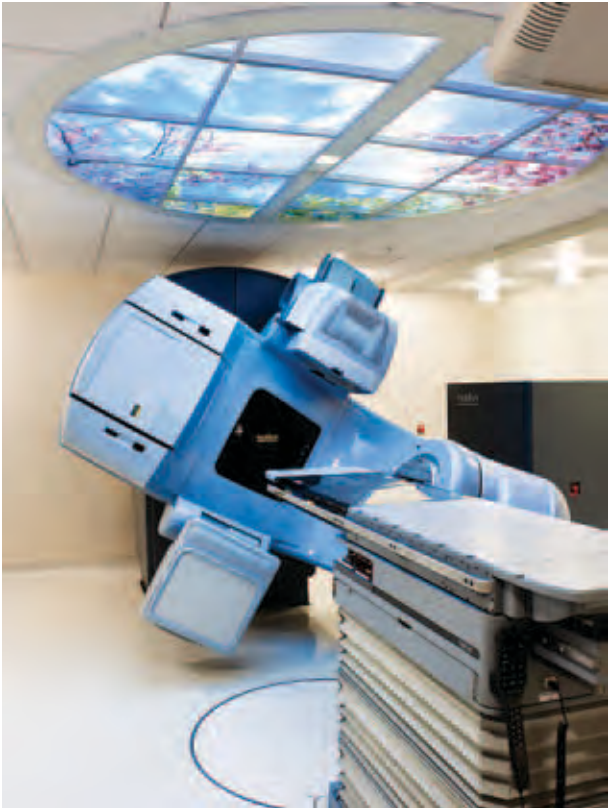


# FINANCIAL NEWS

## INCOME SUMMARY 2011



### Foundation Grants Administered



New linear accelerator in the Cancer Center

For the past several years, the Foundation has concentrated on grants to build the new Cancer Center, Vascular Suite, and Women’s Center. We raised and awarded \$4.5 million to help pay for the new linear accelerator and new suite of infusion bays for chemo therapy; and will award \$3.5 million to purchase new surgical equipment and construction of the Vascular Suite, and \$750,000 to build and furnish the Women’s Health Center.

But, generous donors also funded medical care for those who cannot afford to pay. In 2011, we administered:

- \$75,000 in support of medical care for needy patients,

- \$110,000 for patients at the Sister Mary Philippa Clinic, and
  - \$50,000 for disadvantaged children under the age of 11 years
- In early 2012, the Foundation will also grant a total of \$428,000 to pay for medical care administered to those individuals in need. On behalf of the Foundation Grants Committee, we thank and acknowledge each donor who makes it possible to fulfill the mission of the Sisters of Mercy. We are all proud to continue the tradition of serving the sick and the poor regardless of their ability to pay, and providing excellent and compassionate medical care to San Francisco.

### MEDI-CAL, LONG-TERM CARE AND ESTATE ASSET PROTECTION

Attorney Paul D. Hunt will speak on  
“The Medi-Cal Maze – Tips, Traps and Solutions”

Tuesday, May 1, 2012  
2:00 – 3:30 pm

Morrissey Hall, C Level  
2250 Hayes Street  
St. Mary’s Medical Center

An educational, estate planning seminar where we will focus on:

- ▣ **Quality of Life**  
How to find the best nursing homes, and how to use the Medi-Cal system properly, to assure the best possible care.
- ▣ **Qualifying Quickly**  
The best methods for allocating income, spending down assets, and transferring property, which do not result in disqualification.
- ▣ **Protection from Reimbursement Claims**  
How to protect your home (and your entire estate) against Medi-Cal reimbursement claims, even if nursing care might be needed for years.

Space is limited. To make a reservation, call the St. Mary’s Foundation at (415)-750-5790.

## Asian Physicians Winners in More Ways than One

One of the largest pledges in the Physician Campaign for the 2008-2011 Capital Campaign came from the St. Mary's Asian Physician Advisory Committee (APAC). Chaired by Dr. Kevin Lee and Dr. Kevin Man, more than 22 APAC members committed to the \$100,000 pledge for the Campaign.

APAC has a long history of community service and loyalty to St. Mary's and our patients. Physicians volunteer their services to the annual Cherry Blossom festival in Japantown and Chinatown health fairs, and give seminars in senior centers. Many of the members are fully bilingual, which is a vital asset in today's economy and the San Francisco community. The members are able to communicate complicated medical terminology to the participants, which not only helps alleviate confusion, but comforts them as well.

Aside from the medical field, there is another side to APAC that many people would be surprised to hear – every year a large group participates in the Dragon Boat races at Treasure Island. Dragon boating is a boat of

20 paddlers, a drummer and a steers person paddling to cross the finish line faster than their competition. It's a team sport that encompasses the elements of power, speed, synchronization and endurance. Several members are accomplished rowers and lead the band of novice athletes. In September 2011, with lots of sweat and flying oars, the St. Mary's Mercy Dragons won the Corporate Novice B Division. Way to Go APAC!!!

## EXCELLENCE

*Exceeding expectations through teamwork and innovation.*

## Family First : Meet Dr. Charlton



*“To us, family means putting your arms around each other and being there.”* Barbara Bush

Whether he is putting his arms around his grateful patients or one of his three beloved daughters, Dr. Francis (Frank) Charlton, Jr., is always there for his family. Born and raised in San Francisco, Dr. Charlton just hasn't been able to get away from his home because of all of his “family.”

Charlton, who grew up only a half mile from his current private practice on Ocean Avenue, was groomed to be a physician by his late father, Dr. Francis Charlton, Sr., who was well respected at St. Mary's.

Charlton says, “My dad was a role model and an instrumental figure in my life. The affect he had on the community was invaluable.”

As a boy, he attended St. Ignatius High School and continued his education at the prestigious Stanford University for his bachelor's degree and Georgetown University for medical school. While he enjoyed his time in Washington, DC, he had left his heart in San Francisco; thus he returned for his residency work, which is when he met his supportive wife, Kate.

As current Chief of Staff of St. Mary's, Dr. Charlton is thrilled to be leading the St. Mary's team and is honored and privileged to hold this prestigious role. It is a position he has worked hard to earn and seems only fitting that a family man would help lead St. Mary's through many upcoming changes.

When asked about retiring, Dr. Charlton says he doesn't think about it much. As long as he is capable to serve his patients, he plans to keep caring for them. He has no plans to retire in the near future.

When he does finally retire, he will always be remembered for his superb care for his patients; after all, he is one of the top physicians' consistently honored annually by patients for Doctor's Day.

“He is very caring. Thank you for keeping me healthy year after year,” says an anonymous Dr. Charlton grateful patient.

And not many people know it, but his eldest daughter is on the verge of graduating from medical school herself. There may just be another Charlton to carry on the family tradition.

## JUSTICE

*Advocating for social change and acting in ways that promote respect for all persons and demonstrate compassion for our sisters and brothers who are powerless.*

## STEWARDSHIP

*Cultivating the resources entrusted to us to promote healing and wholeness.*

### A Student at Heart: Sister M. Timothy Gallagher



In 1854, a small band of Irish sisters sailed halfway around the world to San Francisco with an ambitious plan: to heal the sick and poor in a city that had virtually no health care regulations and only one hospital for the indigent. That heartfelt commitment to serving patients with dignity and kindness continues to this day at St. Mary's through all of our dedicated employees. One employee, who has committed more than 35 years to St. Mary's, still shows that same motivation that those band of Irish Sisters did over 150 years ago.

“Working in a ministry that serves the community keeps me motivated and dedicated to St. Mary's. I love what we do for the disenfranchised today,” says Sister M. Timothy Gallagher.

Sister Tim, who was raised in San Francisco, was born in this same hospital that she has dedicated much of her life to serving. She was one of the first high school students who spent two hours after school volunteering, which is where her love for healthcare, specifically nursing began. After attending one year of college, she entered the Sisters of Mercy at the young age of 19 and was later professed in 1960 as a Sister of Mercy.

During her tenure at the hospital, Sister Tim worked her way up through the ranks of nursing, most notably serving in nursing management. She very much enjoys not only teaching others, but learning each day.

“In today's society with all the technology, I knew it was time for me to step down from nursing management and let the younger people with more knowledge have a chance. Each day is still interesting to me because I just love to teach and I learn from them too,” she says.

While retirement is not long away for Sister Tim, you won't find her sitting at home with nothing to do. She plans to still volunteer in the community and continue spreading the ministry she was born and raised doing. Serving others is what she feels called to do with her time, whether that involves bringing communion, teaching others, or supporting her nieces and nephews at their ball games.





**St. Mary's Medical Center  
Foundation™**  
A Dignity Health Member

450 Stanyan Street  
San Francisco, CA 94117

415-750-5790  
www.supportstmaryssf.org

Nonprofit Org.  
U.S. Postage  
PAID  
San Francisco,, CA  
Permit No. 925

# DIGNITY

*Respecting the inherent value  
and worth of each person.*

# COLLABORATION

*Working together with people who  
support common values and vision  
to achieve shared goals.*

## St. Mary's Foundation Mission Statement

The Foundation exists to support the mission of St. Mary's Medical Center. We do this through our encouragement of charitable giving, our stewardship of donor gifts and our own grantmaking that promotes the provision of excellent medical care with understanding and dignity.



## St. Mary's Medical Center Mission Statement

Dignity Health and St. Mary's are committed to furthering the healing ministry of Jesus, and to providing high-quality, affordable healthcare to the communities we serve.

### Board of Directors

#### Officers

Charles Higueras, Chair  
John A.B. Espiritu, Vice Chair  
David Lyon, Treasurer

#### Members

Joan Bertani  
Michael Brown  
John P. Christian  
Francis Charlton, Jr., M.D.  
James M. Illig  
Janet Kallo, M.D.  
Robert J. Lalanne  
George Lawson  
Frank J. Martin  
Patrick R. McKenna  
Marisa Moret  
Richard Podolin, M.D.  
William J. Powers  
Anne-Marie Regal, M.D.  
*Jena B. Ruhland\**  
Sister Susan Vickers, RSM  
Stanley K. Yarnell, M.D.

#### Directors Emeritus

Robert J. Deitz, M.D.  
Doug Dillard  
Kenneth J. Mills, M.D.  
Eugene C. Payne III  
Cynthia Rowland

#### Ex-Officio

Anna Cheung, Hospital President  
Margine Sako, Executive Director

*\*deceased*

### Staff

Margine Sako, Executive Director  
Mary Poppingo, Manager of Major Gifts  
and Planned Giving  
Andrea D. Whittaker, Donor Relations Specialist  
Kevin Bulivant, Accounting  
Macrina Ostrowski, Administrative Assistant

### Contact Information

St. Mary's Medical Center Foundation  
450 Stanyan Street  
San Francisco, CA 94117  
Ph: 415-750-5790  
Fax: 415-750-8132  
www.supportstmaryssf.org