

FOUNDATION CONNECTION



WOMEN & MEDICINE CONQUER AT&T PARK AND THE RAIN



Anna Cheung, Dr. Pam Lewis, Catherine Main, Judy Domenici, Judi Stewart

They braved wind and wet to celebrate St. Mary's and the Giants! In late February, the Foundation hosted our Women & Medicine group at AT&T Park for hotdogs and an insider's view of the Giants organization.

40 members and their guests were greeted by Jason Pearl, Managing VP for Business Development; Bill Laskey, Comcast analyst and former pitcher; mascot Lou Seal; and two World Series tro-

phies! Much to members' delight, Dr. Bob Perez, uber-Giants fan, busted loose with dance partner Lou Seal – Susan Goodwill, Chair, demonstrated her perfect batting form after years of serious softball/baseball playing – and, no one let the rain and cold deter them from touring the dugout and field.

The fun and camaraderie represented the Foundation's intent to thank the contributing members for their generosity and optimism in

TO LEARN MORE ABOUT THE **FOUNDATION** FIND US ONLINE AT

www.supportstmaryssf.org

Know more and stay connected on:

- Events
 - Golf Tournament August 25th
- Campaigns
- News
- Memorials
- Tributes
- And more...



Lou Seal, Carmelina Narciso, Zoila Calvo-Perez

continued on page 3

DOCTORS' DAY 2014



March 30th commemorates Doctors' Day- a day to express appreciation for the lifesaving work of doctors everywhere. For the past 5 years, the Foundation has celebrated this National holiday to thank our doctor's for their excellence and compassionate care.

Throughout the month of March, the Foundation received nearly

300 gifts totaling over \$30,000 in honor of our physicians. Included with the donations were heartfelt notes expressing gratitude to one or multiple [St. Mary's] physicians that were mailed to them in April.

To celebrate the success of Doctor's Day 2014 the Foundation will be holding a reception in honor of our physicians on Wednesday, June 4th to thank not only our doctor's, but our donors for their contributions to St. Mary's.

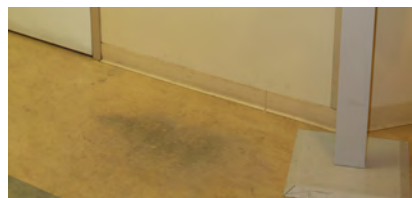
If you donated to Doctor's Day and have not received an invitation, please call us at (415)750-5790.

TOP CELEBRATED OF 2014

- Dr. Remo Morelli
- Dr. Kenneth J. Mills
- Dr. Gerald Murphy
- Dr. Francis Charlton, Jr.
- Dr. William McGann
- Dr. Richard Podolin
- Dr. Kenneth Yamamoto
- Dr. Pamela P. Lewis
- Dr. Charles Allison
- Dr. John Umekubo
- Dr. Jennifer Van Warmerdam

EMERGENCY DEPARTMENT GETS A "FLOOR-LIFT"!

The Emergency Department at St. Mary's is the busiest department in the hospital. With patients coming in and out, 24-hours a day, 365 days a year, the floors were in definite need of some TLC. With funds raised between the hospital and \$63,000 from Foundation donors like you, the department finally received an



Before the remodel

upgrade!

"The new floor is amazing and has improved the appearance of the department significantly" commented Michael Thomas, Director of the Emergency Department. Amazingly, during all the construction, the department was able to operate around the work and disruption. Michael also stated that, "the ER staff continued doing an outstanding job, despite not having access to 2-4 patient rooms at a time and no decrease to incoming sick and injured."

Prior to the remodeling, the



After the "floor-lift" with ER Staff

floors looked worn, now the floors look great and we have received great feedback from visitors.

WOMEN & MEDICINE continued from page 1



"Women & Medicine" warmly welcomed on the score board

support of St. Mary's hospital.

Dr. Pam Lewis acknowledged and thanked W&M for their recent contributions that made possible tremendous advancements in technology and services for women's health. Susan spoke



Marisa Moret, Kimiko Burton with the World Series Trophies

from her heart, citing the compassionate and excellent care from the physicians and staff, and her vision for Women & Medicine to continue and grow its support of St. Mary's "a little jewel of a hospital."

Women & Medicine members are invited to meet several times a year in distinctive settings for festive socializing with St. Mary's physicians and other supporters. It is a philanthropic group of donors who contribute \$1,000 annually and each year decide which hospital project to fund. Please contact Margine Sako at 415-750-8108 for more information and details.

THANK YOU ST. MARY'S VOLUNTEERS

April 6 – 13 we acknowledged the wonderful work our volunteers do during National Volunteer Appreciation week at St. Mary's Medical Center. Each year over 200 individuals give hundreds of hours to help in many departments at St. Mary's. Volunteers are vital to our patients, visitors and staff. They can be found at our Information Desk, Gift Shop, Surgery waiting rooms, on all nursing floors, our Cancer Center, Spine Center, administrative



Front Desk Volunteers: Lara Clements, Thomas Nuyens, Percy Lee and seated, Julia Souza. Julia just retired as a volunteer with 2,340 hours of service since 2003.

offices and many more areas. Each day, they make a difference in the lives of those they come in contact with. This past year, our volunteers recorded over 17,000 hours helping visitors and patients at St. Mary's.

At an Open Forum held by Lloyd Dean, Dignity Health CEO, two of our volunteers were recognized for their many years of outstanding service and dedication. Helen

Perlite has been the longest serving volunteer on record, having begun her service on March 4, 1982 and with over 6,200 hours to date. The individual with the most hours on record is Eleanor Paccioretti with over 11,100. She began her service on July 22, 1985. In addition to being exemplary volunteers they have also been very active in the St. Mary's Auxiliary. We applaud these two women for their continued service and commitment to our hospital and patients.



Helen Perlite & Eleanor Paccioretti



Gift Shop volunteers Graciela Ditmars, Lana Chronis, Liz Nott, and Jeanalyn Dela Cruz

supportstmaryssf.org

ST. MARY'S MEDICAL CENTER

May 2014

FOUNDATION CONNECTION

One of the greatest forms of charity is to care for the sick and the poor – St. Mary's has always dedicated resources and excellence to serve those in need.

We are proud to present our 35th Annual partnership with The Olympic Club for golf, camaraderie, and community service. Come join us on Monday, August 25th for a special day of:

- Exclusive world class golf with access to the legendary Lake Course, home of five US Open tournaments; the pristine beautiful Ocean Course; or 9-holes on the Pacific Ocean bluffs
- PGA golf pro clinics for your long/short games
- Ample giveaways, and a chance to win 1st or 2nd Place prizes on all three courses.

2014 also brings a new partner, the Saint Francis Foundation, whose mission is to assist Saint Francis Memorial Hospital to deliver exceptional health care services and compassionate care to its patients.

Beneficiaries of the tournament are the St. Mary's Sister Mary Philippa Clinic, the largest private free medical clinic in San Francisco, and the expansion of Saint Francis' community care services. Together we focus on providing medical care to the truly desperate in our communities.

*Sponsorship details are located at www.supportstmaryssf.org
For more information please call (415)750-5790.*

August 25th

35th Annual Golf Classic

THE OLYMPIC CLUB



ST. MARY'S & SAINT FRANCIS
FOUNDATIONS

